

CONFIX FWS-A

Bulkhead Fittings for Conduit Screw Connections



IP54



Metric internal thread for
conduit screw connections

Product Description

The 90° angled conduit fitting CONFiX FWS is for installation of parallel corrugated cable protection conduits, e.g. in machines, control panels or other electronic enclosures.

The liftable cover is tightly fixed by a hinge. Therefore, the system is fast and easy to install.

CONFIX FWS is offered in the following versions:

CONFIX FWS-A with metric internal thread M16 to M50

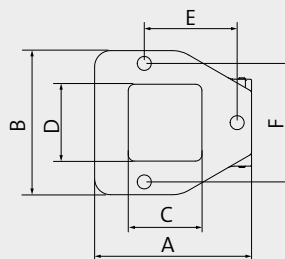
CONFIX FWS-B with a grooved conduit clip for types with sizes NW 13, 17, 23, 29, 37 and 50.

The available colors are gray (RAL 7011) and black (RAL 9005).

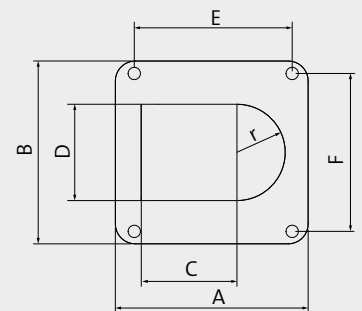
Accessories

CONFIX WS conduits 136 - 137

Type	Internal Thread	Hole Ø [mm]	Size (A × B) [mm]	Cut-out (C × D) [mm]	Drill. Templ. (E × F) [mm]	Order No.	PU
CONFIX FWS-A16	M16 × 1.5	3 × 4.3	49 × 45	22 × 22.6	29 × 37	■ 31380 ■ 31381	10
CONFIX FWS-A20	M20 × 1.5	3 × 4.3	49 × 45	22 × 22.6	29 × 37	■ 31383 ■ 31384	10
CONFIX FWS-A25	M25 × 1.5	3 × 6.6	67 × 63	37 × 28	41.5 × 51.5	■ 31386 ■ 31387	10
CONFIX FWS-A32	M32 × 1.5	4 × 6.6	85.5 × 76	41.9 × 40 r = 20	64.5 × 64.5	■ 31389 ■ 31390	10
CONFIX FWS-A40	M40 × 1.5	4 × 6.6	97 × 92	48.3 × 48.4 r = 24.2	79.5 × 79.5	■ 31392 ■ 31393	5
CONFIX FWS-A50	M50 × 1.5	4 × 6.6	111.5 × 100.5	53 × 60.5 r = 30.25	87.5 × 87.5	■ 31395 ■ 31396	5



Size / Drilling template
FWS-A 16 to 25



Size / Drilling template
FWS-A 32 to 50